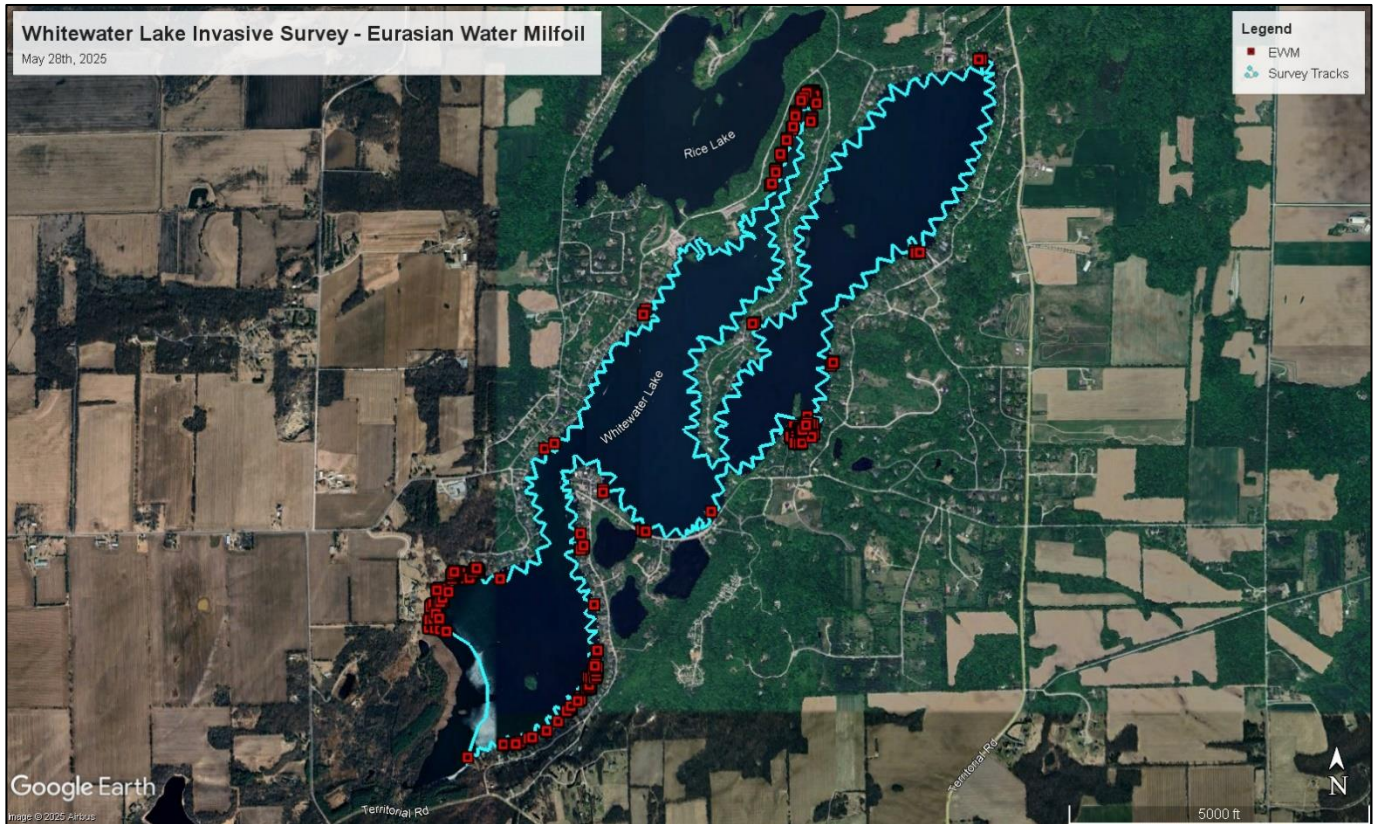


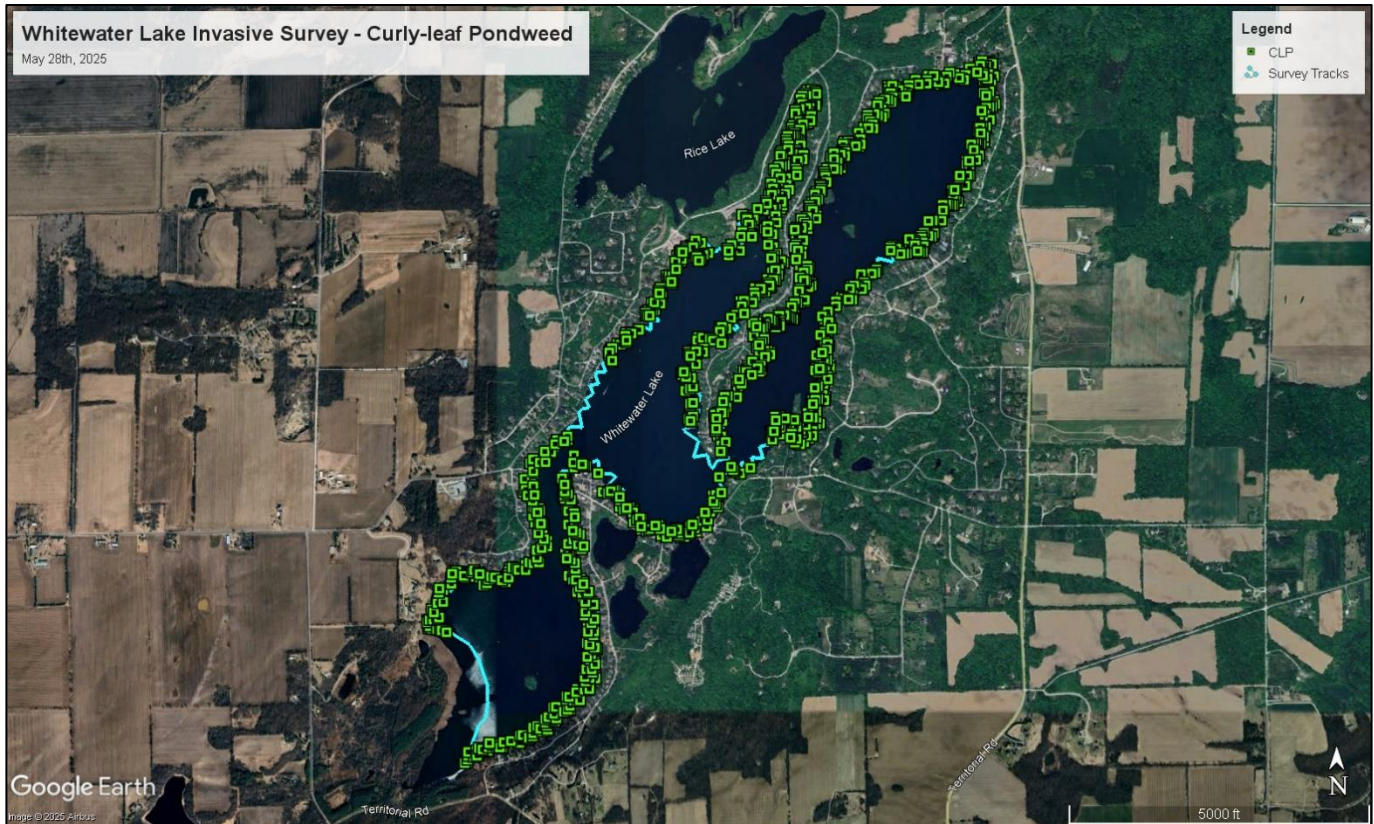


## WHITEWATER/RICE LAKE SURVEY AND SUMMARY

We were out to survey the lakes on May 28<sup>th</sup>, 2025 for invasive species. In particular, we were looking to identify areas of Eurasian water-milfoil (EWM) and curly-leaf pondweed (CLP). For the survey we use a meander technique meaning that we weave in and out of the shoreline marking species observed visually or confirmed by sonar and rakes throws. Below are the maps by lake showing our boat course in blue as well as the marked points for EWM (red) and CLP (green).

### WHITEWATER LAKE





Clarity on the lake was below average with limitations related to suspended sediment in some areas and planktonic algae in other areas. EWM was generally not as tall as we expected, and clarity issues did make it tougher for true identification. Much of the cut floating vegetation was void of milfol fragments indicating less growth throughout the lake and we utilized rakes to determine if the smaller EWM plants were present. The worst areas were the NW lobe, the East bay by the island, and much of the south lobe. CLP was prevalent and at the lake surface around most of the lake shoreline. The marked growth ranged from larger beds to individual but consistent plants. There were only a few areas where we found no CLP. Most of the cut floating vegetation around the lake is made up almost solely of CLP fragments.

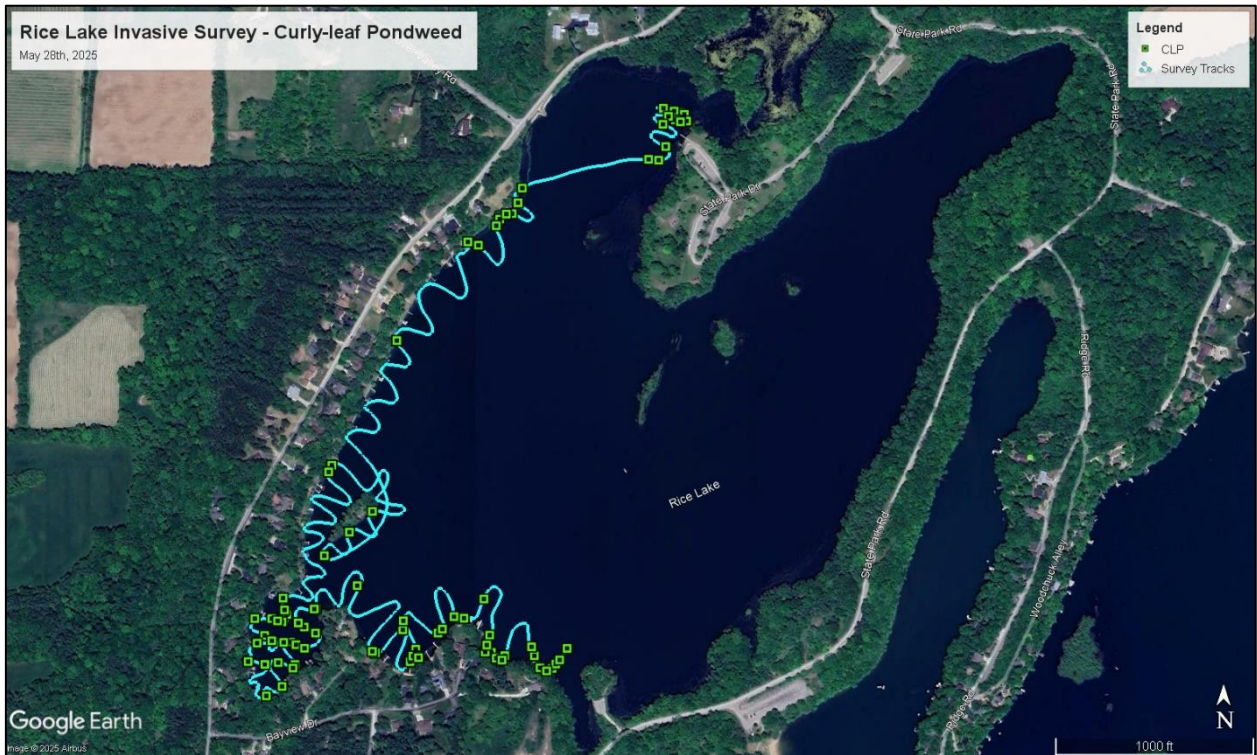
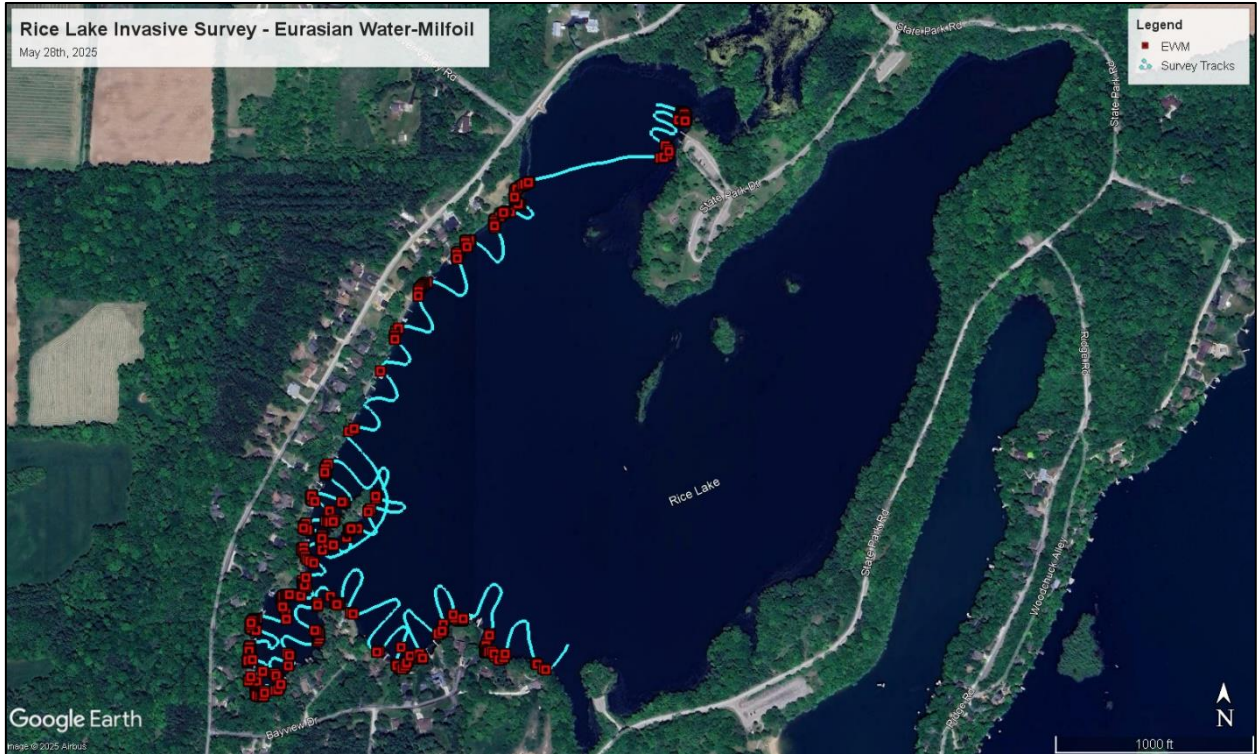
### RICE LAKE

Clarity on the lake was very poor with most of the issues likely caused by suspended sediments. This clarity impairment has limited most of the growth to the first 50' of shoreline. EWM was found scattered throughout the survey area with the most abundant growth found in the SW corner of the lake. CLP was a little more sparse than EWM but again, the SW end of the lake had the most abundant growth. Both species were found near the boat launch as well.



Lake and Pond  
Solutions, LLC

PROVIDING ENVIRONMENTALLY SOUND AQUATIC MANAGEMENT SOLUTIONS



Lake and Pond  
Solutions, LLC

If you have any questions, please don't hesitate to reach out. Thanks!!

Sincerely,



Jeff Stelzer – Owner/Senior Biologist  
Lake and Pond Solutions, LLC  
(cell) 262.379.7524  
(office) 262.742.2600



Lake and Pond  
Solutions, LLC

PROVIDING ENVIRONMENTALLY SOUND AQUATIC MANAGEMENT SOLUTIONS